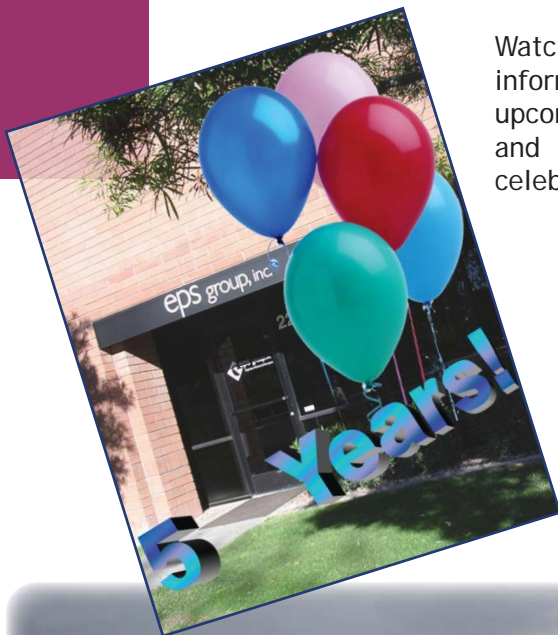


## Another milestone - June 23, 2008 EPS's 5<sup>th</sup> Anniversary

Founded in 2003 by Darrell Truitt, Kevin Morgan, Brandyn Jones, Gail Morgan, and Jerry Swaney - EPS has grown in many ways - from occupying one suite in Fiesta Tech Business Center to needing over 12,000 square feet of space in Mesa and an additional office in Tucson; from 7 initial employees to over 50 full time employees.

The vision for EPS Group was and continues to be a shared desire to conduct a business where the measurements of success are quality of work, highest possible customer satisfaction, and integrity in all of our business dealings.



Watch your mail for information about our upcoming open house and 5<sup>th</sup> Anniversary celebration.

## New Location for EPS

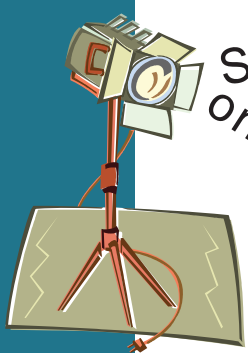
After 5 years at our present location, EPS Group is moving to new offices in the Odyssey Professional Park, located at 2045 S. Vineyard Avenue (just over 100 yards north of our current location).



The shell was completed in February. The new office space is over 12,500 square feet and allows us to design our workspace for efficiency and growth. Interior construction will be completed in late summer and we will complete our move by early Fall.

email: [contacteps@epsgroupinc.com](mailto:contacteps@epsgroupinc.com)  
[www.epsgroupinc.com](http://www.epsgroupinc.com)





## Spotlight on eps group Inc.

### Past & Present

#### EPS Planning Department Expanded to Include Landscape Architecture



Tom Snyder, RLA, ASLA joined the EPS Planning Department in May, 2008, expanding the range of Planning services to now include the component of Landscape Architecture. Under the direction of Josh Hannon, the department already provides such

services as Conceptual & Master Planning through the Entitlement process. EPS now also provides Landscape Architecture services from Conceptual Design to Construction Documentation and Construction Observation.

While practicing Landscape Architecture for over ten years, Tom Snyder has had the opportunity to be involved in several prestigious projects from large scale to site specific. His expertise in Urban Design, which includes Institutional and Mixed-use Retail Development, Resort Planning & Design and management brings an invaluable element to the Planning department, EPS Group, Inc and to any critical project.

Tom's previous work from another landscape architectural firm includes such projects as: Main Street Commons, Kierland Commons Residential Towers, University of Arizona Highland District Housing, Highland Commons, Highland District Quadrangle Open Space and Pima Community College - Northwest Campus in Tucson, Arizona. Other significant work experience also includes The Rocks at Pinnacle Peak, We-Ko-Pa Golf Clubhouse, Villa Cortez Resort and the Kierland Westin Resort & Spa renovation.

#### Reflections from an EPS Partners

As a Partner at EPS Group, what are your thoughts about the last five years and your vision for EPS's future?

"It has been a whirlwind ride since the inception of EPS Group. I am grateful to all of my partners, co-workers and our clients for the teamwork and loyalty that has occurred over the past five years. It is my vision that present and future partners will continue the reputation for quality service and communication that has been so diligently realized; that current employees are continually mentored and choice new employees hired to perpetuate the partnership long into the future, to meet the needs of our clients." Gail Morgan

Ms. Morgan is one of the founding partners of EPS Group and the EPS Legal Survey Department Manager.

email: [contacteps@epsgroupinc.com](mailto:contacteps@epsgroupinc.com)  
[www.epsgroupinc.com](http://www.epsgroupinc.com)

Projects

Newly Award Contracts

EPS has been awarded multiple contracts for public works projects in Maricopa County and Pima County during the first two quarters of 2008.

The **Town of Gilbert** selected EPS to perform design services on the **Val Vista Drive (Germann Road to Queen Creek Road) improvements project** (CIP Project ST124). The road will be widened to provide three travel lanes and a bike lane in each direction, raised landscaped medians with left turn lanes at appropriate locations, sidewalk, curb and gutter, traffic signal modifications, retention basins, street lights, water and sewer utilities, and drainage facilities.

EPS was also selected by the **City of Casa Grande** to perform roadway design services for improvements to **Cottonwood Lane (Trekell Road to Henness Road)**. The improvements will include increasing the width of Cottonwood Lane to make it consistent with adjacent portions of the existing roadway, providing two lanes in each direction separated by a curbed landscaped median.

Current EPS's Tucson office projects with the **City of Tucson** and **Town of Marana** include:

**Treat Ave Pedestrian Bridge and Walkway Enhancement.** EPS is preparing the project assessment for enhancement grant funding from ADOT for a neighborhood pedestrian walkway. Improvements will include ADA ramps, raised crosswalks, pedestrian bridge ramps and new concrete sidewalk.

**The Tanque Verde Right -Turn Lane at Pio Decimo** which includes design surveying, roadway design plans, signing and striping plans, traffic control plans, traffic signal modification plans, and utility conflict assessment. EPS's is preparing the construction plans and bid documents for this right turn lane design from eastbound Tanque Verde to southbound Pio Decimo.

**Silverbell Rd Right - Turn Lane at Coachline Blvd** - EPS has recently completed the construction plans and bid documents for this right turn lane design; and will be providing post design services during the bidding and construction process. The Town needed to provide a safer right turn movement from northbound Silverbell Rd to eastbound Coachline Blvd. The project included design surveying, roadway design plans, signing and striping plans, traffic control plans, and utility conflict assessment.

New Commercial Project

EPS Group Inc. provided civil engineering and land surveying services for a proposed **Hyatt Place** hotel site. The site is located near Val Vista Drive and 202 Santan Freeway in Gilbert, Arizona and is currently under construction. Woodbine Southwest is developing the site for the Hyatt Companies. Architectural services are being provided by PK Architects.

The six-story, 127-room Hyatt Place hotel is anticipated to open as early as April 2009. Hyatt Place is a new kind of hotel that puts style, innovation and The Hyatt Touch® within everyone's reach. Guests will enjoy a spacious guestroom with a 42" flat panel high-definition television, signature Hyatt Grand Bed™, a plush Cozy Corner oversized sofa sleeper that is separated from the sleeping area, and complimentary high-speed Wi-Fi Internet access throughout the hotel.

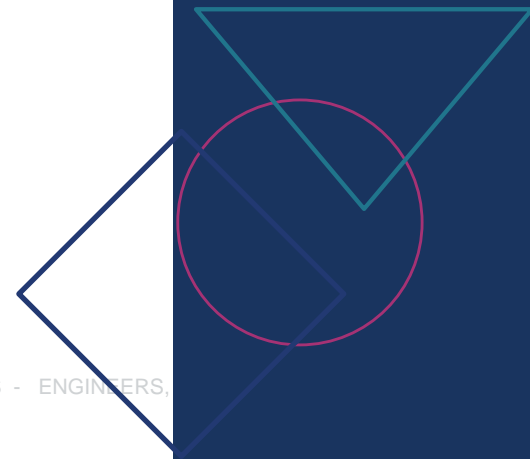


Hyatt Place

Image provided by PK Architects

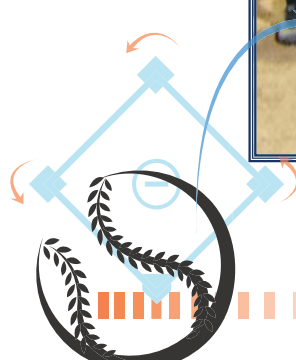
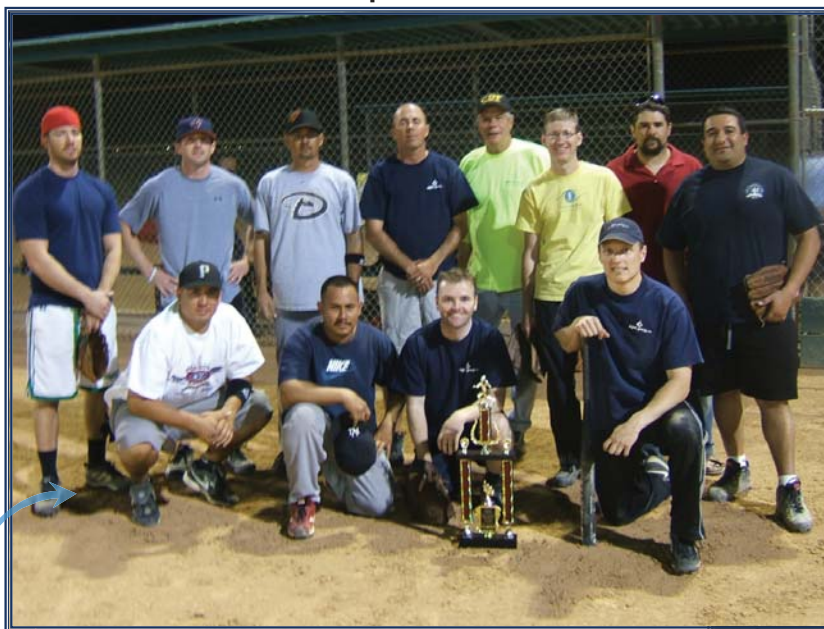
Civil Engineering services provided by EPS Group provided included the grading and drainage plan and the site utility plan. In addition, EPS Group provided topographic surveying and final platting for the site. Post design services included providing a certification of the construction of the public portions of the sewer and water lines.

email: [contacteps@epsgroupinc.com](mailto:contacteps@epsgroupinc.com)  
[www.epsgroupinc.com](http://www.epsgroupinc.com)



# Congratulations

## EPS Group's Softball Team



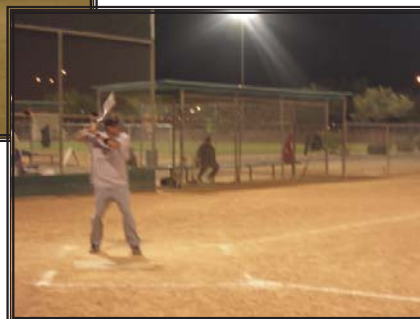
### 1st Place

City of Mesa  
Mesa Parks and Recreation  
2008 Spring Softball League  
Men's "D" Division  
Record: 15 wins - 1 loss



#### Team Roster:

- Chad Doyle
- Dan Olsen
- Edgar Medina
- Elijah Williams
- Jon Lassuy
- Matt Truitt
- Brandyn Jones
- Steve Lay
- Josh Hannon
- Paul Donovan
- Lucio Gaspar
- Kyle Tilgman
- Brett Tafoga
- Ignacio Lopez
- Manny Villa



email: [contacteps@epsgroupinc.com](mailto:contacteps@epsgroupinc.com)  
[www.epsgroupinc.com](http://www.epsgroupinc.com)

MESA:  
2150-1 S. Country Club Drive, Suite 22, Mesa, AZ 85210  
O: 480-503-2250 F: 480-503-2258

TUCSON:  
17 W. Wetmore, Suite 302, Tucson, AZ 85705  
O: 520-408-1400 F: 520-408-1403

*'raising the bar within the industry'*

