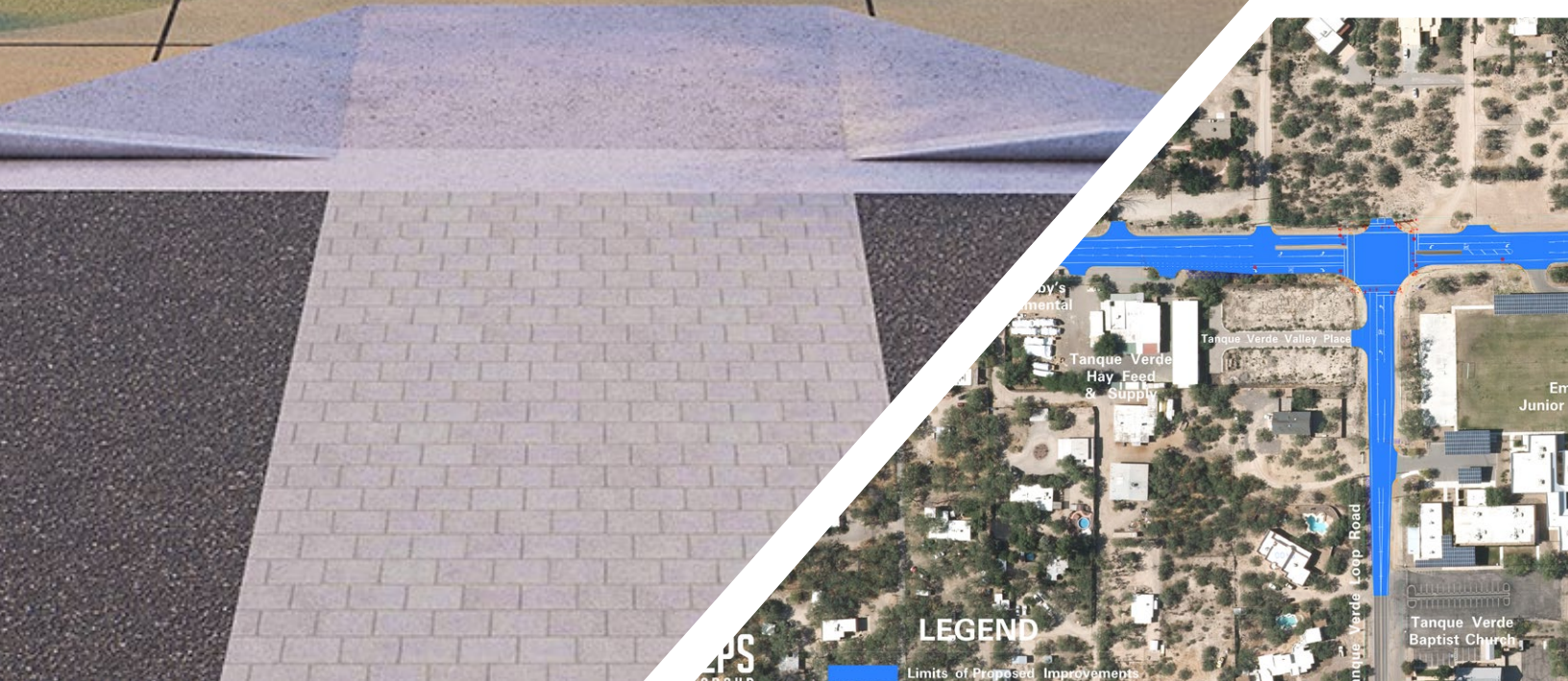




1130 N. Alma School Road, Suite 120, Mesa, AZ 85201

PUBLIC WORKS STATEMENT OF QUALIFICATIONS



LET'S ELEVATE *Arizona Together*

At EPS Group, we are your dedicated engineering partner, committed to elevating Arizona's public works departments. With a legacy of excellence since 2003, we have become a trusted industry leader, known for our unwavering dedication to improving the communities we serve. Our team of over 300 talented professionals excels in multi-disciplinary land and infrastructure development, making us a reliable choice for public works projects that demand the highest standards of quality and efficiency. When you choose EPS Group, you gain access to a large-scale firm with a people-first approach, ensuring that your public works initiatives thrive and flourish.

EPS Group takes pride in offering Arizona's public works professionals an integrated and efficient solution for their complex projects. Our Arizona-based team understands the unique intricacies of working within the state's rapidly growing counties and municipalities. We bring clarity to even the most challenging endeavors. For public agency clients across Arizona, this translates into meeting deadlines, managing budgets, and achieving project success that fills us all with pride. Together, **LET'S ELEVATE *Arizona Together*** (see [webpage here](#)) as we continue to make a lasting impact on the state's public works landscape.

OUR EXPERTISE

- Traffic Solutions
- Transportation Infrastructure
- Water/Wastewater
- Flood Control/Mitigation
- GIS
- Utility Coordination



OTHER EPS GROUP SERVICES

- Land and Field Survey
- Landscape Architecture
- Construction Management
- Planning
- Land Development



GREG FROEHLICH, PE

Public Works Department Manager

Greg is an accomplished project manager known for consistently delivering projects on time. With over 27 years of expertise in civil engineering, he has successfully handled various projects for municipal, tribal, county, and state clients. His experience encompasses a wide range of areas, including roadway design, intersection design, storm drain design, hydrology, cost estimating, and construction inspection. Greg's management approach is characterized by attention to detail, strong adherence to schedules, and quick responsiveness. He is dedicated to delivering cost-effective and schedule-conscious designs that precisely align with clients' requirements.

Experience

18 Years with EPS Group
27 Total Years Experience

Education

A.S., Civil Engineering,
Arizona State University

Registrations

Professional Engineer (civil),
Arizona #37285

Contact Greg
(epsgroupinc.com/contact)

Project Experience (1/5)



2019 Arizona Transportation Partnering Excellence Award Winner

ADOT – SR 347

Maricopa, Arizona

- Prepared Design Concept Report for SR 347 grade separation over UPRR tracks
- Addressed daily crossings of 40 to 60 freight trains
- Recommended a solution to enhance access, mobility, and alleviate traffic congestion
- Developed the project's Final Design, involving utility and roadway relocations
- Conducted regional traffic analyses and designed complex geometric configurations
- Led multiple well-attended public meetings



City of Maricopa – East-West Corridor (Sonoran Desert Parkway, Phase 1): SR 347 to Porter Road

Maricopa, Arizona

- Completed design for Arizona Parkway along the East-West Corridor in Pinal County
- Project includes the westernmost two miles of the Corridor and a half-mile stretch of Porter Road with a new bridge over the Santa Rosa Wash
- Involved extensive coordination with adjacent development projects to ensure necessary accesses and utility infrastructure
- Providing oversight for the construction of roadway and streetscape improvements

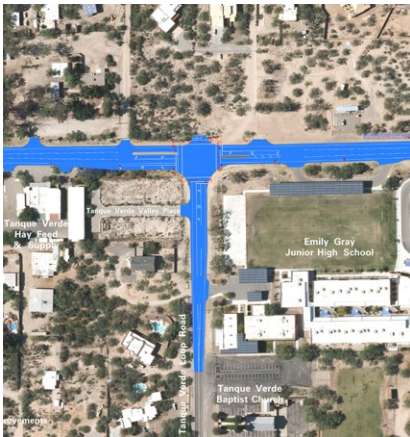


ADOT – US 60X Improvements: Sossaman Road to Meridian Drive

Mesa & Apache Junction, Arizona

- Designing a five-mile arterial roadway section
- Reducing the cross section to two lanes in each direction
- Installing curb, gutter, sidewalks, bike lanes, and lighting along the corridor
- Resolving all right-of-way encroachments
- Excess right-of-way transfer to adjacent property owners upon project completion

Project Experience (2/5)



Pima County – Tanque Verde and Tanque Verde Loop Intersection

Tucson, Arizona

- Intersection faced heavy traffic volumes and high delays
- Guided and developed project through the Project Assessment process following ADOT LPA guidelines, demonstrating successful collaboration with Pima County on a smaller federally funded project within budget
- Team worked through the traffic analysis, finding that both the t-intersection or a standard 4-leg intersection would perform very comparably to the initially proposed concept (Florida T-intersection)
- County moved forward with a widen and overlay option; reduced construction cost without a significant loss in service life



City of Sierra Vista – Fry Boulevard, Road and Streetscape Improvements

Sierra Vista, Arizona

- Designed roadway and streetscape improvements for Fry Boulevard corridor in Sierra Vista's revitalization initiative to activate multi-modal transportation
- Project scope involved public participation elements, utility coordination, surveying, and right-of-way mapping
- Assisted City staff in preparing the bid package and bid analysis
- Successfully selected a contractor for the improvement project
- Providing oversight for the construction of roadway and streetscape improvements



MCDOT – Broadway Rd. SDR: 75th to 51st Ave.

Phoenix, Arizona

- Three miles of Broadway Road crossing South Mtn. Freeway (SR 202) and paralleling future SR 30 freeway
- Project aimed to assess impacts from the construction of SR 202 and future SR 30
- EPS Group developed a Scoping and Design Report (SDR) with 30% plans and conducted a traffic analysis
- Challenges included SRP 230kV and 69kV power lines and multiple water and sewer lines along the corridor
- Efforts made to develop roadway designs that avoided conflicts

Project Experience (3/5)



Valley Metro / City of Mesa – Gilbert Road Light Rail Extension

Mesa, Arizona

- Civil engineering and survey consulting for a 1.75-mile Main Street extension in downtown Mesa
- Project involved roadway design, bus pull-outs, drainage design, utility coordination, surveys, right-of-way plans
- Generated over 200 legal descriptions/exhibits
- Value Engineering Workshop led to EPS Group's recommendation to relocate the Gilbert Road station, resulting in a \$1.5 million cost savings



City of Globe – Pinal Creek Bridge and Road Replacement

Globe, Arizona

- Relocated a bridge over Pinal Creek, replacing an aging structure
- Reconfigured local streets to accommodate the new bridge location, shifting it 300 feet upstream
- Created a new at-grade crossing of the Arizona Eastern Railway (AZER) with pedestrian-friendly gate arms
- Conducted analysis of the Pinal Creek watershed to provide mitigation for FEMA floodway impacts
- Coordinated with stakeholders including the City and AZER right-of-way considerations, along with utility providers, and residents
- Emphasized driver safety, addressing issues like confusing old intersection geometries



City of El Mirage – Dysart Road/Peoria Avenue, Area Regional Drainage Analysis

El Mirage, Arizona

- City had existing plans for Dysart/Peoria intersection improvements
- Landowner/stakeholder requested additional drainage enhancements
- Required drainage evaluation of the adjacent watershed to the northeast
- EPS Group created a FLO-2D drainage model of the upstream watershed
- Model served as the foundation for designing a new storm drain and retention basin
- The system will carry runoff across Peoria Avenue and into a planned regional detention basin

Project Experience (4/5)



City of El Mirage – Dysart Road, 12-inch Water Main

El Mirage, Arizona

- Designed 1.5 miles (6,200 l.f.) of 12" ductile iron water main on Dysart Road, replacing an undersized 6" waterline
- Re-established meters and services for adjacent residential properties
- Addressed challenges in defining alignment to minimize pavement replacement and utility conflicts; Included encasement, vent pipe, and valve designs for a planned railroad spur crossing
- Delivered project on an accelerated timeline to meet City requirements



Southwest Gas Corporation – On-Call Civil Engineering Consulting Services

Throughout Southern Arizona

- On-call engineering contracts with EPS Group since 2015
- Tasks span multiple Southwest Gas Southern Arizona Division Districts (Tucson, Valley, Mountain, and Yuma)
- Projects involve hydrologic, hydraulic, and structural analyses
- Also include improvement site plans, utility research, and municipality/agency records research



U.S. Army Corps of Engineers – Luke Air Force Base, Sewer Lines/System Replacement

Glendale, Arizona

- Luke Air Force Base wastewater system had expanded to 160 miles of trunk main, 22 lift stations, and a wastewater treatment plant since the 1950s
- Evaluated 35,236 l.f. of sewer mains through surveying, CTV scoping, and structural and hydraulic analyses
- Recommended the installation of 12,753 l.f. of new gravity sewer and force main, along with 36 manholes and two lift stations
- Restructured 20 brick manholes and lined 49 separate locations to repair 13,000 l.f. of sewer
- Resulted in the elimination of six existing lift stations

Project Experience (5/5)



Arizona Dept. of Transportation – Site Design Support for On-Call Architectural Services Contract Throughout Arizona

- Subconsultant to the architect for the on-call contract, providing civil engineering and survey services
- Projects included:
 - De-Icing Building in Superior, AZ (prepared building removal and new building plans, grading/paving plans, site modifications and drainage, topographic basemapping)
 - District Lap Site Plan in Kingman, AZ (4,000 SF materials lab, installation of parking spaces, loading dock, and drainage facilities; topographic mapping and a digital surface model)
 - Keams Canyon Truck Barn in Hopi Nation, AZ (6,000 SF snow removal building)
 - Office Building Modifications in Tempe, AZ (building and parking lot modifications affected by the I-10 Broadway Curve)



Maricopa County Parks and Recreation Department – Vulture Mountains Recreation Area Wickenburg, Arizona

- Developed regional design strategies for a four-phase project, spanning 1,046 acres
- Identified suitable terrain for access roads, Nature Center, themed playground, campsites, restrooms with showers, OHV and equestrian facilities, and picnic ramadas in an area with ephemeral washes
- Landscape architects integrated nature with the built environment, including outdoor amphitheater events, scenic view plazas, habitat for desert tortoises, and interpretative signage along scenic pathways
- Designed new water and waste-water systems for the park along with utility coordination



City of Peoria – Main Library Renovation, New Children's Garden

Peoria, Arizona

- Revitalized the library's outdoor space, creating a vibrant children's learning garden
- Updated entry with modern signage and prickly pear gate design
- Central shaded lawn area for play and events, surrounded by planters and whimsical daisy sculptures
- Included learning elements: native desert garden, butterfly and hummingbird garden, and movable planters for teaching gardening and STEAM concepts

Team Members (1/2)



Mesa, Arizona

MATT TRUITT, PE, CFM

Senior Project Manager

Matt has served as project manager for numerous transportation projects over the past 18 years. His experience includes roadway, site infrastructure, and drainage designs. He also has completed transportation studies and roadway designs under multiple on-call contracts for the Maricopa County Department of Transportation and the Arizona Department of Transportation. Matt is a Certified Floodplain Manager, and serves as drainage lead for EPS Group's Public Works infrastructure projects.

Experience

18 Years with EPS Group
18 Total Years Experience

Education

B.S., Engineering,
Arizona State University

Registrations

Professional Engineer (civil),
Arizona #48287

Certified Floodplain Manager
#US-12-06707



Mesa, Arizona

ERIC MACEYKO, PE, PTOE

Traffic Engineer

Eric has 23 years of experience in traffic engineering. His expertise focuses primarily on traffic impact studies, traffic signal design, parking studies, roundabout analysis, transportation planning, traffic signal analysis, and traffic design projects. Through this range of work, Eric has developed his project management, design, and technical skills. He has gained valuable experience working with numerous Arizona municipalities and counties, as well as the Arizona Department of Transportation.

Experience

12 Years with EPS Group
23 Total Years Experience

Education

B.S., Civil Engineering,
Arizona State University

Registrations

Professional Engineer (civil),
Arizona #42629

Professional Traffic Operations
Engineer #2105



Mesa, Arizona

BRYAN MARTIN, PE, PTOE

Project Manager

Bryan began working at EPS Group upon graduating from Arizona State University in 2010. His experience in Traffic Engineering includes a variety of traffic impact studies, parking studies, plan preparation, and roadway design projects. His work on past projects have helped him develop design and technical skills, as well as proficiency with AutoCAD, MicroStation and InRoads.

Experience

13 Years with EPS Group
13 Total Years Experience

Education

A.S., Civil Engineering,
Arizona State University

Registrations

Professional Engineer (civil),
Arizona #58920

Professional Traffic Operations
Engineer #4845

Team Members (2/2)



Tucson, Arizona

JEFF STINE, PE

Senior Project Manager

Jeff is a highly experienced senior project manager and has been the Principal Civil Engineer in EPS Group's Tucson Office since its opening in 2005. He has completed more than 200 projects over the past 18 years at EPS Group. Jeff has specialized relevant expertise in small, multi-disciplinary projects. He is experienced in developing federally funded projects from planning through the design and construction stages. Jeff will guide the prioritizing and development process, ensuring the project improvements our team delivers will meet the City of Willcox's expectations.

Experience

18 Years with EPS Group
30 Total Years Experience

Education

B.S., Civil Engineering,
University of Arizona

Registrations

Professional Engineer (civil),
Arizona #34022



Tucson, Arizona

ANTHONY HERRERA, PE

Project Manager

Anthony has 25 years of experience in the design and construction of roadway projects. He is one of the most versatile engineers in the EPS Group family, having worked on public works projects of various complexities. Anthony will be the lead roadway engineer for this contract. He also serves as the lead utility design and coordination engineer for EPS Group. He has identified and resolved utility conflicts for many utility owners and municipalities in Southern Arizona. Anthony is adept at finding solutions that minimize conflicts with proposed roadway improvements and that work in harmony with the roadway construction, including the demolition of existing facilities.

Experience

18 Years with EPS Group
25 Total Years Experience

Education

B.S., Civil Engineering,
University of Arizona

Registrations

Professional Engineer (civil),
Arizona #40219



Tucson, Arizona

JAMES BEIER, PE, PTOE, RSP1

Traffic Engineer

James has 19 years of experience in transportation engineering, with knowledge that includes roadway design for multiple Arizona agencies. He is extremely skilled and knowledgeable of the City of Tucson's guidelines and standards for roadway design, access control, signalization operations, and mobility. He is a Level 1 Road Safety Professional (RSP1). To achieve this certification from the Transportation Professional Certification Board, James had to demonstrate his knowledge and level of practice in the foundations of road safety principals in the areas of engineering, motor vehicle, behavioral, law enforcement, and emergency response.

Experience

13 Years with EPS Group
19 Total Years Experience

Education

B.S., Civil Engineering,
University of Arizona

Registrations

Professional Engineer (civil),
Arizona #51304

Professional Traffic Operations
Engineer #3301